



# MOON



**Corpo:** stampato in ABS di colore bianco.  
**Diffusore:** policarbonato antiurto, stabilizzato ai raggi UV, finitura bucciata.  
**Modulo LED:** da 10 e 18W, 3000/4000K.  
**Alimentazione:** 220/240V 50/60Hz con reattore elettronico.

**Disponibile a richiesta:**

- kit emergenza;
- sensore di presenza.

**Body:** molded in white ABS.  
**Diffuser:** impact resistant polycarbonate, UV stabilized, textured finishing.  
**LED module:** 10 and 18W, 3000/4000K.  
**Power supply:** 220/240V 50/60Hz with electronic ballast.

**Available on request:**

- emergency kit;
- HF Sensor.

**COLORI DISPONIBILI**  
 Available colours

- 1 Bianco  
White

# MOON

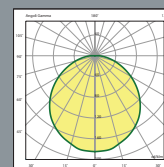
m<sup>2</sup> 0.012  
 325x325x110mm

1 Pcs  
 70 pcs

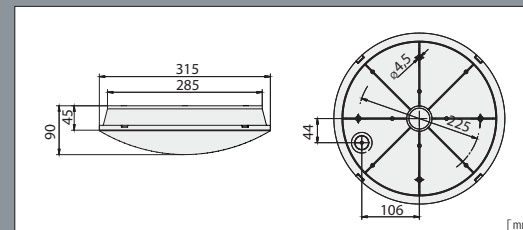
IP54 IK 10

CODICE Code	CABLAGGIO Wiring	POTENZA Power(W)	FLUSSO NOM. Typical Flux(lm)	COLORE LED Beam color(K)	PESO NETTO Net weight(Kg)	SORGENTE Light source	COLORE Colour
620641.103	LED	10W	1250	3000	1,00	LED	■
620641.104	LED	10W	1250	4000	1,00	LED	■
620641.113	LED + HF SENSOR	10W	1250	3000	1,00	LED	■
620641.114	LED + HF SENSOR	10W	1250	4000	1,00	LED	■
620641.203	LED	18W	2275	3000	1,30	LED	■
620641.204	LED	18W	2275	4000	1,30	LED	■
620641.213	LED + HF SENSOR	18W	2275	3000	1,30	LED	■
620641.214	LED + HF SENSOR	18W	2275	4000	1,30	LED	■

code + 01 Kit Emergenza 3h | 3h emergency kit (disponibile su/available on 18W)



LED 10W 3000K



[mm]